

Building a
better future !



READY MIX PLASTER

Polymer Based Ready Mix Plaster
For Internal & External Plastering

 **GERMAN TECHNOLOGY**




ASSURE MIX
— BHAROSA MAZBOOTI KA —

www.assuremix.com

ASSUREMIX READY MIX PLASTER

AssureMix Ready Mix Plaster is exquisite polymer based, ready to use plastering mortar for all masonry application and pre tiling repair work. Infused with high grade German Polymers, it is perfect product for all Wall masonry, RCC, Columns, Beams, flooring and even ceilings. The brilliant concrete mix provides a perfect finish and makes all surfaces ready before final finishing applications.

APPLICATION AREA

Assure Mix Ready Mix Plaster is the go to product for plastering inner and outer walls. Along with this it is brilliant for unbeatable finish while brick layering, stone wall construction as well as all types of concrete surfaces. It is a great product where wall thickness is above 10mm and excellent single layer coverage is needed.

• Ready Mix Product • Quick and time saving application • Low Curing Time

FEATURES



German Polymers
Mix For Perfection



Smooth
Finish



Brilliant
Uniformity



Minimum
Wastage



Highly Water
Resistant



Convenient for
rapid work



Cost
Effective



Stronger Bond
Than Cement



Less
Rebound



No Curing
Needed



Single Component
& Easy to use



Impurity Free

GERMAN TECHNOLOGY



AVAILABLE PACKAGING

40 KG BAGS

Substrates

- Plaster Based Surfaces
- Concrete Backgrounds

Coverage

- 18-22 Sqft./40 KG for 12 mm thickness depending on surface undulations.

Composition

- High grade OPC Cement Binders and Fillers.
- Advanced German Polymers.

Uses

- Suitable for interior and exterior application
- Usable on new/old walls

Colour Test

- Grey Dry Powder
- Tested as per IS 2547:1976, ASTM C 926, EN 13279-1:2018

Manufactured as per IS1661-1971, IS 2250-1965, IS 2402-1963 standards
(An ISO 9001/ISO 45001/ISO 13007 Certified Company)

TECHNICAL PROPERTIES

Parameters	Standard	Assuremix Results	Method
Colour/Appearance	Grey Granular Powder	Grey Granular Powder	Visual
Retained on 2.36 mm (%)	0-5 (%)	3.0 %	IS 4031-1
Passing on 0.150 mm	20-30 (%)	25 %	IS 4031-1
Bulk Density (Kg/Ltr)	1.6-1.8 Kg/Ltr	1.72 Kg/Ltr	EN 1015-6
W/P Ratio (%)	15-20 %	17 %	Manual
Wet Density (Kg/Ltr)	1.8-2.2 Kg/Ltr	2.0 Kg/Ltr	EN 1015-6
Pull Off Strength (28 Days)	≥ 0.5 MPa	0.55 MPa	EN 1015-12
Compressive Strength (28 Days)	Min. 10 MPa	12.0 MPa	IS 4031-6

How To Apply

01 Surface Preparation

- Prepare the surface before the application of the Ready Mix Plaster by removing any stains, oil, bond, adhesive, cement blobs, inhibiting agents, dust etc.
- Use wire brush and water jet mopping for cleaning.
- Pre wet the surface using normal water before applying the Ready Mix Plaster.
- Ensure certain roughness of the surface is maintained before applying the ready mix plaster to achieve better adhesion.

02 Mixing

- Take 8-10 Liters clean water ready in a bucket.
- Add the content of the bag to the water and not Vice Versa.
- Use stirrer to mix for 5 min for homogenous paste without lumps.
- Stand the paste for about 10 min to activate the polymers.
- Re-mix again for about 1 minute and make paste ready for use.

03 Application

- Before applying the paste dampen the surface with water and allow excess water to run off.
- Apply the paste with 6 mm notched trowel and spread evenly.
- Remove overrun mixture and clean with cloth.

04 Precautions

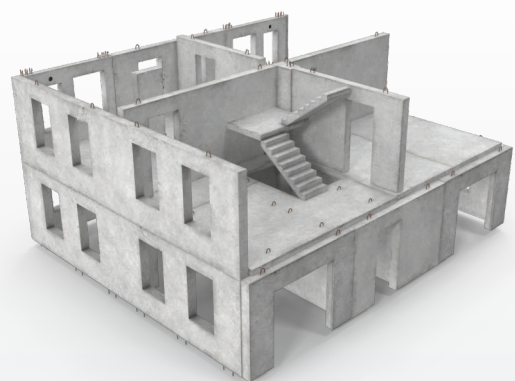
- Do not add extra water than mentioned.
- Not applicable for wooden and metallic surfaces.
- Provide enough roughness on the base surface for high strength bonding.

Health & Safety Information

- Avoid direct eye and skin contact as it is polymer based.
- In case of eye contact kindly wash eyes with clean water for at least 20 minutes and seek medical help.
- Keep out of reach of children.

Storage Instructions

- Store in cool, dry and well ventilated place, away from heat and direct sunlight.
- Keep away from moisture and damp area.
- Avoid using material partially, don't keep bag open after partial use.
- Keep bag mouth tied and store in secure place to avoid any lump formation.
- Treat above instructions as general and secure bag as per weather, moisture, humidity and other parameters of site.



भरोसा
मजबूती का....!

READY MIX PLASTER



MANUFACTURED & MARKETING BY :

Varah Industries LLP - Opp. Ratan Industries Area, Village-Badgaon,
Madanganj-Kishangarh, Ajmer, Rajasthan-305801 (india)

SCAN FOR
MORE DETAILS

Follow Us On :-

     /Assuremix

E-mail : cc@assuremix.com

Website : www.assuremix.com

